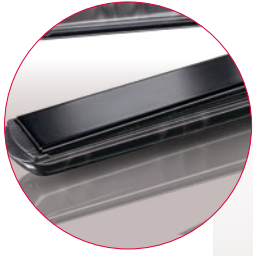




A sleek curved design for easier control, the **Must Styler** makes straightening and curling easier and faster than ever



High-tech, high performance: perfect results

- 230°C high heat
- Advanced floating Nano Titanium Sol-Gel 24mm plates
- Advanced Heat Management System: advanced ceramic heating element
- Instant heat recovery to maintain the correct temperature during use



Precision & control

- Digital temperature display and temperature control
- 10 variable heat settings (140°C - 230°C)

Time saving

- Ultra fast heat up
- Unique programmable memory function for easy '1 touch' temperature selection



Safety & energy saving

- Automatic safety switch off, activates after 72 minutes
- Silicone heat mat
- On / off button
- 2.70m length professional swivel cord

Elegance & glamour

- Luxury case and storage pouch
- Glossy finish with 3D effect

Curved body with gloss finish, glides through the hair creating gorgeous curls in one smooth stroke



BAB2095E ▶

Must Styler
BaByliss® PRO